

## SPECIAL POINTS OF INTEREST:

- **NEW MN-DONA LOGO!**
- District Reports
- Classifieds
- Personal Balance Scholarship
- Spring Conference
- MN-DONA Calendar
- LeadingAge Booth

## INSIDE

### THIS ISSUE:

President's Message,	1
Classified Ad's	
President's Message	2
Continued	
NEW MN-DONA	3
LOGO!, Fall Conf 2018	
MN-DONA Calendar	4
District Reports	5-7
LeadingAge Institute,	8
Personal Balance	
Scholarship	
Scholarship Thank You's	9-10
LeadingAge Workforce	11
Challenge	
2018 Spring Conference	12
Webmaster,	13
APIC BIP Class	
MN-DONA Call for	14-16
Nominations	
New Members	17
Renewing Members	18-19
New and Renewing	20
Assisted Living Members	
Committee	21
Application	
Committee	22
Opportunities	
Sponsors	23-25
Board Members,	26
Committee Chairs,	
2018 Calendar	

# MN-DONA FOCUS

VOL 7, ISSUE 1

JANUARY 2018

## Letter from the President

As a prisoner for the Lord, then, I urge you to live a life worthy of the calling you have received. Be completely humble and gentle; be patient, bearing with one another in love. Ephesians 4: 1-2

January. A time for reflection. A time for hope.

As I reflect on 2017, the recently celebrated precious Christmas time, and our time together at Fall Conference, it is with deep appreciation, I want to express gratitude.

We continue to work in challenging times, yet you, our members, are relentlessly giving to your organizations. Thank you for your commitment to your teams, providing encouragement and compassion as our expert caregivers, too, are making sacrifices in their homes and families. The support of their families is tremendously important and relevant to professional caregiver retention.

It was a delight to recognize the Administrators support, allowing nurse leaders to learn and network together at Fall Conference. Our attendance was highest it has been in five years. Thank you!

Huge "Thank you's" to our MNDONA Sponsors and exhibitors. It would be difficult to have a successful conference without you. Hugs to our friends – old and new!

Behind the scenes, we thank the Breezy Point staff, In House Media and our management company Best Meetings Inc.

Our board reviewed and signed the contract with Best Meeting for the upcoming two years. If you have questions about the services Best Meetings (BMI) provides, please don't hesitate to contact me.

We have been deep in the trenches of the Mega-Final Rule. It is my hope that we can focus on people and retention of our wonderful professional caregivers. The bareness of our January trees, lends to

Continued on page 2

## CLASSIFIEDS

### NEW POSTING!

#### MN-DONA Board Positions Available starting April 2018

Recording Secretary  
Corresponding Secretary  
District Director 2  
District Director 4  
District Director 6

Please see pages 14-16 of the newsletter and/or visit the MN-DONA website for more information

### HELP WANTED

#### Committee Members

Nominating Chair

Immediate part-time opening for energetic, creative people that like to help serve others. No experience required!

Responsibilities include but not limited to: communication and involvement with the chairperson via emails and conference calls.

### HELP WANTED

#### MN-DONA Liaisons:

We are looking for liaisons to other partner organizations so we are in the know! Liaison positions that are open are:

- MOLN

Responsibilities include: Attending meetings and bringing information to MN-DONA.

### NEW POSTING!

#### MN-DONA Board Positions Available

District V Director

Please see District V Report on page 6 of the newsletter and/or visit the MN-DONA website for more information.

## President's Message Continued

transparency, openness with our team helps engage them. One person at a time, we can build individual relationships with healthy boundaries. Share with us on Facebook your success stories or best practices on retention.

LeadingAge MN has launched the OnTrack Nursing Assistant Training Program and has an onboarding tool kit available as well. You can find these resources on the LeadingAge MN website.

Our industry places great demands, unhealthy working hours and a demand to "be available 24/7". It is part of MN-DONA's goal to assist our members with healthy stress management and support. We want to keep our nurse leaders in their positions. In the past, at a Spring Conference we were fortunate to have Minnesota Health Professionals Service Program (HPSP) present and educate us about their program. This is a resource available for healthcare workers that may have fallen into mental health disorders or substance abuse. Here is their website: [mn.gov/boards/hpsp](http://mn.gov/boards/hpsp).

We are excited to share that Kristine Rogers of Lyngblomsten has been voted in and accepted the District 7 Representative position. District 5 is currently open. We wish the outgoing Laura DuCharme of Avera Tyler, God's blessing on her next adventure. Her contributions will be missed.

In the midst of the noise, trouble and hard work, I wish you peace and calm in your hearts. God's blessings for you in 2018.

Warmly,  
Jenny



**Jenny Parker RN,**  
**MN-DONA President**  
**Director of Bethesda Club Suites**  
**Willmar, MN 56201**  
[jenny.parker@bethesdawillmar.com](mailto:jenny.parker@bethesdawillmar.com)  
**320.214.5669**



## MN-DONA Membership

### How does your membership benefit you?

#### You get:

- The bi-annual edition of *Focus* (MN-DONA's online newsletter emailed to members).
- Access to the MN-DONA website ([www.MNDONA.org](http://www.MNDONA.org)).
- Educational programs at the Spring and Fall Conferences.
- Scholarship opportunities (Educational and Personal Balance).
- District meetings held around the state to meet with DONs and ADONs in your area to discuss current issues.
- Liaisons to organizations like: Minnesota Medical Directors Association, LeadingAge of Minnesota Board of Directors, Care Providers of Minnesota Regulatory Affairs, Stratis, APIC MN, Minnesota Center for Nursing, and the University of Minnesota School of Nursing.
- And much more!

We are very excited to present our  
new MN-DONA Logo to you!!!  
Thank you to all that submitted a design!



**MN-DONA**  
**MINNESOTA**  
Directors Of Nursing Administration



**Fall Conference**

**SAVE THE DATE**

**October 10-12, 2018**

**Breezy Point Resort**

# MN-DONA 2018

District 1 Meeting



District 2 Meeting



District 3 Meeting



District 4 Meeting



District 5 Meeting



District 6 Meeting



District 7 Meeting



Board Meeting



Board Retreat

LeadingAge MN  
Reception

Spring Conference



Fall Conference

Newsletter  
Deadline

## January

Su	Mo	Tu	We	Th	Fr	Sa
	1	2	3	4	5	6
7	8	9	10	11	12	13
14	15	16	17	18	19	20
21	22	23	24	25	26	27
28	29	30	31			

## February

Su	Mo	Tu	We	Th	Fr	Sa
				1	2	3
4	5	6	7	8	9	10
11	12	13	14	15	16	17
18	19	20	21	22	23	24
25	26	27	28			

## March

Su	Mo	Tu	We	Th	Fr	Sa
				1	2	3
4	5	6	7	8	9	10
11	12	13	14	15	16	17
18	19	20	21	22	23	24
25	26	27	28	29	30	31

## April

Su	Mo	Tu	We	Th	Fr	Sa
1	2	3	4	5	6	7
8	9	10	11	12	13	14
15	16	17	18	19	20	21
22	23	24	25	26	27	28
29	30					

## May

Su	Mo	Tu	We	Th	Fr	Sa
		1	2	3	4	5
6	7	8	9	10	11	12
13	14	15	16	17	18	19
20	21	22	23	24	25	26
27	28	29	30	31		

## June

Su	Mo	Tu	We	Th	Fr	Sa
					1	2
3	4	5	6	7	8	9
10	11	12	13	14	15	16
17	18	19	20	21	22	23
24	25	26	27	28	29	30

## July

Su	Mo	Tu	We	Th	Fr	Sa
1	2	3	4	5	6	7
8	9	10	11	12	13	14
15	16	17	18	19	20	21
22	23	24	25	26	27	28
29	30	31				

## August

Su	Mo	Tu	We	Th	Fr	Sa
			1	2	3	4
5	6	7	8	9	10	11
12	13	14	15	16	17	18
19	20	21	22	23	24	25
26	27	28	29	30	31	

## September

Su	Mo	Tu	We	Th	Fr	Sa
						1
2	3	4	5	6	7	8
9	10	11	12	13	14	15
16	17	18	19	20	21	22
23	24	25	26	27	28	29
30						

## October

Su	Mo	Tu	We	Th	Fr	Sa
	1	2	3	4	5	6
7	8	9	10	11	12	13
14	15	16	17	18	19	20
21	22	23	24	25	26	27
28	29	30	31			

## November

Su	Mo	Tu	We	Th	Fr	Sa
				1	2	3
4	5	6	7	8	9	10
11	12	13	14	15	16	17
18	19	20	21	22	23	24
25	26	27	28	29	30	

## December

Su	Mo	Tu	We	Th	Fr	Sa
						1
2	3	4	5	6	7	8
9	10	11	12	13	14	15
16	17	18	19	20	21	22
23	24	25	26	27	28	29
30	31					



## District I Report

### Meeting Schedule:

Second Wednesday of every other month. (February, April, June, August, October, December)

District One meets every other month on the second Wednesday at 12 p.m. at Joe DiMaggio's in Erskine, MN. Our next meeting will be on February 14th.



Tricia Hove  
District Director

## District II Report

District II has an upcoming get together on Friday, January 26<sup>th</sup>, 2018 from 12-2 at Grizzly's Restaurant in Duluth, MN. We will be meeting every other month and rotating sites. It's so important to have these meetings for support, guidance, and sharing. I highly encourage all members to block the time out on their busy schedules and attend in order to get to know your fellow district members. I hope to see you there!



Jennifer Capra  
District Director

January 26<sup>th</sup>: St Williams Living Center in Parkers Prairie

April 26<sup>th</sup>: During Spring Conference

June 1<sup>st</sup>: Vets Home

August 3<sup>rd</sup>: Eventide Moorhead

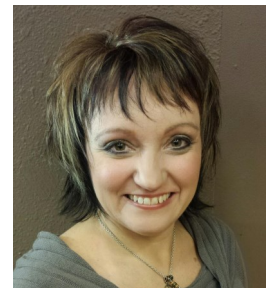
October 11<sup>th</sup>: During Fall Conf - Breezy Point

December 7<sup>th</sup>: Christmas Get together—will look into the Escape room in Alexandria

## District III Report

District III had Lori Kretch from Pathways presenting on Wound Care Management at the August meeting and SPAN America with new bed products and cushions (McKesson) at the December meeting. Lunch is served at our meetings with a networking opportunity during this time. I am looking forward to seeing my district members at the January 26th meeting and If you haven't made it to a meeting recently we hope you'll consider coming!

- Thank you to the sponsors who have come out for education, sharing products and for sponsoring the meetings with lunch!
- All District 3 members should request to be a member of the MN-DONA District 3 Facebook group to stay in connection with other DON members to help support, ask questions, and communicate with each other.



Melissa Peterson  
District Director

Monthly Meetings  
run from  
9:00 a.m. -  
12:00 p.m.

## District IV Report

District 4 meets the first Wednesday of the month at Old Chicago in St. Cloud and noon to have a working lunch. We have a variety of speakers each month at our meeting.

Our District is organizing the Spring Conference in April 2018. We would like all District 4 member to attend our meetings. It is a good way to network with others. We are very supportive of each other.



Marlene Groetsch  
District Director

**Our Meeting Schedule** : First Wednesday of every month at noon.

Old Chicago  
4040 2<sup>nd</sup> St S,  
St. Cloud

## District V Report

District Director  
TBD

We would like to thank Laura duCharme for her past contributions to MN-DONA and wish her well in her future endeavors!!

Are you interested in becoming the new District V Representative? Responsibilities include (but not limited to):

- Monthly Board Meetings (6 in person, 6 conference calls)
- Liaison between the local members in District V with the Board of Directors.
- Plan and attend district meetings every month or every other month, whichever is best for your district.
- Supply agendas, meeting minutes and any assessed fees for meetings to the Board of Directors.

If you have any questions, or if you know of anybody or you yourself are interested in filling this position please contact [deanna@bestmeetings.com](mailto:deanna@bestmeetings.com).



## District VI



Stephanie Sievert  
District Director

District 6 MN-DONA members are welcome to attend our meetings that are held the second Wednesday of every other month (odd) at 12:00 at the Pizza Ranch in Mankato. Lunch is provided. Our meetings focus on the changes, struggles and successes of the facilities within our district. Topics of discussion include; MDS, LeadingAge, Pathways Health, MDH, OHFC, staffing, policies & procedures and, most recently, added discussion on phase one of CMS regulation changes. We welcome new faces and ideas that others can bring to the group. Please contact me with any questions regarding our meetings. So come for the sponsor-provided lunch but stay for the knowledge and support!

Meetings are held at the Pizza Ranch in Mankato on the 2nd Wednesday every other month. (Jan, Mar, May, July, Sept, Nov) Next Meeting is held on March 14th! Come and join the discussion!

Stephanie Sievert  
stephaniesievert@oakhillslivingnewulm.com  
507-233-0841



## District VII

Future meetings are undetermined at this point, please watch your e-mails for more information on the upcoming meetings.



Kristine Rogers  
District Director

## LeadingAge MN Institute & Expo

Join us at the 2018 Institute & Expo and embrace the bold new possibilities that await you. MN-DONA will have a table in the Exhibit Hall on Wednesday, February 7th and Thursday, February 8th. We hope you will stop by!!

Kickstart the new year with an invitation to shed the constraints of the past, to break away from conventional ways and forge ahead with fresh ideas, courageous innovations, bold moves.

The Institute is the catalyst to your best year ahead. Connect with experts and peers to discover the next greatest breakthrough...in your workplace, in strong partnerships, in creating the ultimate customer experience.

There is so much to see and do. From the expanded mix of educational sessions (130+!) to the return of the most popular keynote speaker in Institute history, to the nonstop celebrations of our stars, leaders and innovators—it's all here at the Institute.

You are strong. You are resourceful. You are powerful. You are **BOLD**.

Learn more and sign up here: <http://institute.leadingagemn.org/>

Be sure to visit the MN-DONA table in the Exhibits!!!

## Personal Balance Scholarship

Just a reminder as we all need a break and to focus on our wellness from time to time. MN-DONA offers us a chance to win a scholarship to do just that. We need to make sure we stay well so that we are better able to take care of our residents, our staff and our families. If you have an interest in applying for this scholarship please look on our website and watch your e-mail at the beginning of February or ask your District Representative.



Thank you for your generosity  
and for providing me  
with scholarship monies to  
aid in paying for my  
continuing education. This  
will surely boost me towards  
my educational goals!

Thank you,  
Ashley McIntosh



Something special  
just for you,  
because  
"Thank You"  
is not enough.

Thank you very much for your consideration and acceptance of myself  
for this scholarship! I'm very appreciative of everything MN-DONA  
does to help further the education of students such as myself.

Alice Mohs

I want to take this opportunity to say thanks to your association for  
offering me the MN-DONA Scholarship. For sure this will assist me  
financially in fostering my education.

Once again, thank you,  
Catherine Menawa

THANKS  
Angela Main

I have received the scholarship check from our ADON Becky Rieger.  
Please pass my heartfelt appreciation/thankfulness to all MN-DONA  
members who contributed the money to help us in advancing our  
career in the healthcare field.

Thank you so much

Akawak Regassa

MN-DONA Board,

I just wanted to take a brief moment of your time to say thank you for selecting me as one of your scholarship recipients. It is an honor to be chosen. As I work in an assisted living / memory care facility everyday there are new challenges. In order to grow as a nurse I am currently

in my third of four semesters to earn my MSN in Leadership and Management. It is my goal to complete my degree by December 2018 so I may best serve my residents, their families and be a resource of knowledge to my organization.

Thank You once again for assisting me to achieve my goal.

Respectfully, Anna Peterson

From Hawa Kiohlo

TO MN-DONA

Your thoughtfulness  
certainly made  
a difference in mine.

Thanks Again

## WINONA

STATE UNIVERSITY

October 31, 2017

NOV 04 2017

MN-DONA  
2626 E 82ND STREET STE 270  
BLOOMINGTON MN 55425

### NOTIFICATION OF RECEIPT OF PRIVATE SCHOLARSHIP FUNDS

Student: KYTE, EMMA J Student ID: 11110513

Scholarship Amount: \$500.00

Thank you for your scholarship gift! We have received the funds for the student listed above and hereby inform you that we will verify full time enrollment and disburse according to instructions provided with the scholarship check and in accordance with WSU policies.

These funds will become part of the student's financial aid award package as determined by the WSU Financial Aid Office.

This scholarship check will be disbursed **one-half Fall Semester 2017 and one-half Spring Semester 2018** in accordance with WSU policies. If you wish to have these scholarship funds disbursed in any other manner, please contact us in writing.

The student will be notified of the receipt of these funds and may receive verification of disbursement to their WSU student account following drop/add on or after November 2, 2017 for Fall Semester 2017 and January 19, 2018 for Spring Semester 2018.

If you have any questions, please call. Thank you!

Mary Gudmundson  
Financial Aid Disbursement/Student Accounts  
205 Maxwell  
(507) 457-5075  
1-800-342-5978 Ext 5075  
mgudmundson@winona.edu

Winona State University  
P.O. Box 5838  
Winona, Minnesota 55987



# LeadingAge MN Workforce Challenge

## Let's Change How We Educate Our Workforce

Jan. 17, 2018, by Jenna Kellerman

Are you up for a challenge? The [Workforce Challenge](#) is an opportunity for you to share creative solutions to address educational needs of our workforce.

The information shared will be used to help LeadingAge Minnesota and the education community work together to (re)shape the way educational institutions and training programs educate, equip, and launch the best and brightest workforce possible.

No idea is too small, too big, or too wild for this challenge. So far suggestions include everything from Mental Health/Behavioral Intervention and Skills Training, to Successful Career Planning, to Service Learning Projects, to pitching a reality television show in Hollywood!

**The Challenge Question: What are your workforce needs that an educational partner can address? We want your hopes, ideas, and aspirations.**

**Here's how it works:**

### **Now – Feb. 1: Submission Period**

Submit your idea(s) today through Feb. 1. There is no limit on the number of ideas that you can submit. ALL staff at ALL levels in your organization are encouraged to submit ideas.

### **Feb. 2 – Feb. 16: Voting**

After the idea submission period ends, you are invited to participate in voting to narrow the submitted ideas to the top ideas. Two ideas will appear, and you vote on the best one. Then two more ideas will be presented to you, and so on. Vote on all the ideas or just a few, whatever your time allows.

### **Feb. 19 – March 16: Data Review**

The top ideas voted on from the Voting period will be reviewed. Top ideas will be recognized on the LeadingAge Minnesota website, as well as at the Workforce Solutions Conference in April 2018.

We want your ideas! You have the real working experience, insights and ideas to help us move forward. Staff at all levels are invited to participate, and can expect an invitation from LeadingAge Minnesota to submit their ideas.

Thank you for participating. We look forward to your innovative ideas.

**[Submit your ideas here.](#)**

If you have questions about the Challenge, please contact Jenna Kellerman, Director of Workforce Solutions at LeadingAge Minnesota, at [jkellerman@leadingagemn.org](mailto:jkellerman@leadingagemn.org) or 651.659.1436.

# Spring Conference

April 26-27, 2018 at Best Western Plus Kelly Inn—St. Cloud, MN

Thursday Keynote speaker - Karel Murray, humorist, presenting- straight talk-get off the curb. <http://www.karel.com>

[Click here](#) to see a short presentation by Karel.

The conference speakers will speak on End of life, drug diversion, mental health challenges and medication management. Linda Atkinson from Winona Health will talk on the Lean Method and Mary Absolon will be our final speaker on the new survey challenges.

We are also planning a dinner out at the Old Brick House to give everyone a chance to socialize and relax with a good meal for the evening of Thursday, April 26th.

Hope to see everyone at the fun-filled informative 2018 Spring Conference.

Marlene Groetsch

District 4 Spring Conference Committee Chair



**SAVE THE DATE**  
**Spring Conference 2018**  
**April 26, 2018 -**  
**April 27, 2018**

## News from our Webmaster...



Hello Everyone,

We are looking for a new Webmaster!! Please let us know if you are interested or know the perfect somebody to take over this position.

Duties include:

- Ensure the web servers; hardware and software are operating accurately.
- Ensure website files and dBase are backed up weekly.
- Generate and revise web pages.
- Examine and analyze site traffic.
- Serve as the server administrator.
- Modify appearance and setting of site as directed by the Board.
- Test website to determine difficulty or ease of use.
- Fix links that don't work and pictures that aren't appearing properly.
- Ensure files and images are appropriately sized for ease of use or download.
- Test different browsers and ensure people with different computers can access the website.
- Maintain social media sites for MN-DONA.
- Maintain the website including but not limited to; uploading the directory, biannual newsletter, relevant pictures and updating the website sections etc.
- Respond to email communications on a timely basis.
- Responsible to contact EI2 web consulting when ongoing updates and maintenance is needed for the website.
- Perform other duties delegated by the president and/or the board.
- Conduct transition meeting with successor.

Please contact:

Deanna Merdink at Best Meetings Inc.

deanna@bestmeeting.com

952-858-8875

800-958-8875

### APIC MN 2018 Basic Infection Prevention Course

APIC MN is doing four Basic Infection Prevention Courses are held at the Carpenter's Union Hall in St Paul MN. They will consist of a two-day interactive course will offer a comprehensive foundation for professionals specializing in infection prevention in all settings of health care including: Acute Care, Ambulatory Care, Home Care, Long Term Care, Public Health, Quality Improvement, and Occupational Health.

They are offered Feb 13-14, April 25-26, July 26-27 and October 25-26.

They have reduced the rates to \$375 for APIC MN Members and \$700 for nonmembers.

For more information and to register go to:

<http://community.apic.org/minnesota/meetings/mnbip>

# Call for Nominations 2018

## MN-DONA Needs You

In 2018, five offices on the MN-DONA Board will be up for election. We would like to invite you to consider running for one of the following offices or nominate someone you believe would be a good representative for MN-DONA:

**Recording Secretary**  
**Corresponding Secretary**  
**District II Representative**  
**District IV Representative**  
**District VI Representative**

In 2018, the MN-DONA Board will meet on the fourth Wednesday of the month in St. Cloud in March, June and August and December. The January, February, July and September meetings will be by conference call. The meetings held in conjunction with the Spring and Fall Conferences will be scheduled just before or during the Conference. The meetings usually begin at 9:00 am and end at 2:00 pm. Conference calls are usually one hour in the morning. The structure of the meeting consists of our business meeting and periodic reports from representatives from Care Providers of Minnesota, Leading Age Minnesota and the Minnesota Department of Health.

Board Members often express their appreciation for what they gain by attending the monthly board meetings, i.e., the sharing, empathy, learning, etc.

### Testimonial:

I have been a member of MN-DONA for almost 10 years. I became a member when I was the ADON of a long-term care facility and found out immediately how wonderful it was to get to know other ADON's and DON's who were struggling with the same issues. It was nice to know that I was not in this alone, that I could call any one of my peers and get support or ideas. The education opportunities are outstanding at both our fall and spring conferences. I truly have only missed 1 conference since I joined. Since I joined I have been part of the education/scholarship committee and almost 2 years ago I was accepted onto the board as corresponding secretary which has allowed me to become closer to a lot more members. It also gives me a chance to help others just coming into the field or position. I firmly believe that we all learn from others and from helping others. I have in the past 2 years transitioned to assisted living as a Clinical Administrator, this is an area that is growing quickly and changing at such a rapid speed I do not know how any of us could navigate this without supporting each other. We are a family of caregivers that need support to care for our staff in order for them to care for the residents we all serve. Without MN-DONA I don't believe that I would be as effective at my position or been able to endure the ups and downs for the past 9 years. We all need support at one point and we all have support we can share. MN-DONA is a great organization to give and receive that support.

– Lori Angell, Clinical Administrator at The Farmstead of Andover, Recording Secretary 2016-2017

See page two for more information about the offices from the MN-DONA Constitution:



## ARTICLE IV Officers

**Eligibility.** Candidate must provide proof of current employment as Director of Nursing, Assistant or Associate Director in a licensed Long Term Care facility preferably two years. Candidate must be actively involved in MN-DONA/LTC and has been a member of MN-DONA/LTC for preferably two years. This information must be verifiable by the Nominating Committee. Inaccurate or non-verifiable information will disqualify candidate from seeking office for a period of three years. All officers of the organization shall be actively employed as a DON/ADON/RN's in leadership positions. Should the employment status change, a one year transition period will be allowed.

**Terms of Office.** The term of office for the President Elect is two years, elected every two years in the odd year. The President Elect assumes the duties of President after one term as President Elect. Terms of office for Recording Secretary and Corresponding Secretary shall be two years, elected in even years. The term of office of Treasurer is two years, elected in the odd year. Terms of office of District Directors shall be two years. No member shall be eligible to serve more than two consecutive terms as District Director. Odd numbered districts shall elect a District Director on odd years and even numbered districts shall elect a District Director in even number years. If an officer position is vacated during their term, the Executive Committee shall appoint a replacement to complete the term of office. Terms are effective at the annual meeting.

## ARTICLE V Duties of the Officers

**Section 3. Recording Secretary.** The Recording Secretary shall be responsible for keeping minutes of all meetings held by the Board of Directors and Executive Committee. Meeting minutes shall be forwarded to the Board of Directors members for clarification and correction. After the Board of Directors approval the meeting minutes will be made available to the general membership.

**Section 4. Corresponding Secretary.** The Corresponding Secretary shall be responsible for the dissemination of any and all correspondence including the newsletter of the organization as determined by the President or Board of Directors. By virtue of the office, the Corresponding Secretary shall be a member of the Board of Directors.

**Section 6. District Director.** The District Director shall act as a liaison between the local members residing in his/her district with the Board of Directors. The District Directors shall report to the Board of Directors on a quarterly basis, supply proposed agendas, meeting minutes, and any assessed fees for meetings to the Board of Directors for approval. The District Directors may appoint Area Coordinators, as required, to facilitate communication and development. Area Coordinators will not be included as members of the Board of Directors. The District Director may authorize a proxy in writing to represent him/her at a Board of Directors meeting. The proxy has the ability to vote as needed. No district director may hold more than one office concurrently.

**If you have additional questions, please talk with any Board Member or  
contact Deanna Merdink at the MN-DONA Office.**

**To nominate yourself or a fellow MN-DONA member, please complete the attached form and submit it by March 2,  
2018.**

### MN-DONA

Tel: 952.858.8875 or 800.958.8875

Email: [deanna@bestmeetings.com](mailto:deanna@bestmeetings.com)



**Call for Nominations**  
**Candidate Nomination Form**

*Please complete the following information and return it by March 2, 2018.*

I would like to nominate the following MN-DONA member for:

- \_\_\_ Recording Secretary
- \_\_\_ Corresponding Secretary
- \_\_\_ District II Representative
- \_\_\_ District IV Representative
- \_\_\_ District VI Representative

(Please include name, workplace, work telephone and home telephone numbers.)

Name: \_\_\_\_\_

Organization: \_\_\_\_\_

Work Phone: (\_\_\_\_\_) \_\_\_\_\_ Home Phone: (\_\_\_\_\_) \_\_\_\_\_

**Please sign on the line below to indicate that you have contacted the person(s) being nominated and they have agreed to run for the open office:**

\_\_\_\_\_  
 Your Signature

***Please fax or mail this nomination form to be received by March 2, 2018 to:***

**MN-DONA OFFICE**  
 2626 East 82nd Street, Suite 270  
 Bloomington, MN 55425  
 Email: [deanna@bestmeetings.com](mailto:deanna@bestmeetings.com)  
 Phone Number: 952-858-8875 or 800-958-8875  
 Fax Number: 952-858-8950

## Welcome New Members

*MN-DONA would like to welcome the following new members who joined between the months of August 2017 - December 2017.*

**Thank you for your support!**

First Name	Last Name	Job Title	Company	City	State	District
Paula	Baker	DON	Green Pine Acres	Menahga	MN	4
Katherine	Baldwin	DNS	Pine Haven Care Center	Pine Island	MN	6
Rebecca	Beckerleg	DON	St. Otto's Care Center	Little Falls	MN	4
Andrea	Brooks	DON	Appleton Area Health Services	Appleton	MN	5
Sara	Burgen	DON	Ecumen of North Branch	North Branch	MN	4
Jennie	Carlson	DON	Divine Providence Health Center	Ivanhoe	MN	5
Denise	Carlson	RN	Crossroads Care Center	Worthington	MN	5
Jeanette	Christensen	ADON	Augustana Health & Rehab	Apple Valley	MN	7
Anne	De Leon	DON	Estates at Delano	Delano	MN	4
Mitch	Ejnik	ADON	Appleton Area Health Services	Appleton	MN	5
Shari	Esson	ADON	St. Gertrude's Health & Rehabilitation	Shakopee	MN	7
Jana	Gallinger	Clinical Director	Ecumen Centennial House of Apple Valley	Apple Valley	MN	7
Beverly	Gillund	Dir of Clinical Services	Hendricks Community Hospital Association	Hendricks	MN	5
Dolores	Guggenberger	DNS	Walker Rehabilitation & Healthcare	Walker	MN	4
Kathryn	Hendrickson	ADON	St. Benedict's Senior Community	St. Cloud	MN	4
Melissa	Hoglund	DON	Augustana Care	Moose Lake	MN	2
Christine	Johansen	ADON	MN Veterans Home	Silver Bay	MN	2
Heather	Ogilvie	DNS	Spring Valley Living	Spring Valley	MN	6
Jody	Pautzke	DON	St. John's Lutheran Home	Springfield	MN	6
Laurie	Peniska	DON	Browns Valley Health Center	Browns Valley	MN	3
Shelley	Pletcher	DNS	Good Samaritan Society - Howard Lake	Howard Lake	MN	4
Cheryl	Rasmussen	DON	Valley View Healthcare & Rehab	Houston	MN	6
Kelly	Ray	DON	Chris Jensen	Duluth	MN	2
Susan	Rock	DON	Truman Senior Living	Truman	MN	6
Lori	Stenberg	RN, DON	New Brighton Care Center	New Brighton	MN	7
Robin	Stern	DON	St. Crispin Living Community	Red Wing	MN	6
Rebecca	Tessin-Wika	DON	St. Francis	Breckenridge	MN	3
Amanda	Thorson	DON	Rice Care Center	Willmar	MN	5
Jeri	Van Patten	DON	Good Samaritan Jackson	Jackson	MN	5
Angela	Vatalaro	DON	Aftenro Home	Duluth	MN	2
Peggy	Wangen	DON	Villa St. Vincent	Crookston	MN	1
Kelly	Wicks	DON	Good Samaritan Society, Comforcare	Austin	MN	6
Elaine	Wieser	DON	St. Johns Lutheran Community	Albert Lea	MN	6

# WELCOME

## Renewing Members

*MN-DONA would like to thank the following members who renewed their membership between the months of August 2017 - December 2017.*

*Thank you for your support!*

First Name	Last Name	Job Title	Company	City	State	District
Kimberly	Anderson	RN, DON	Kittson Memorial Healthcare Center	Hallock	MN	1
Kaleeca	Bible	ADON	Augustana Health Care	Minneapolis	MN	7
Lisa	Blahosky	DON	Talahi Nursing and Rehab	St. Cloud	MN	4
Deb	Buker	RN, DON	Ecumen Bethany Community	Alexandria	MN	3
Jennifer	Capra	DON	Sunnyside Health Care Center	Cloquet	MN	2
Catherine	Carlson	RN, ADON	MN Veterans Home - Minneapolis	Minneapolis	MN	7
Danielle	Churness	RN, DON	Good Samaritan Society - Clearbrook	Clearbrook	MN	1
Tracy	Cowell	Nurse Administrator	St. Gertrude's Health & Rehabilitation	Shakopee	MN	6
Bethany	Delvas	DON	Ecumen Scenic Shores	Two Harbors	MN	2
Dee	Erbe	ADON	Samaritan Bethany Home on Eighth	Rochester	MN	6
Darci	Fiala	RN-BC, DNS	Providence Place	Minneapolis	MN	7
Diane	George	DON	Heritage Living Center	Park Rapids	MN	3
Lynn	Gerard	DON	Guardian Angels Care Center	Elk River	MN	7
Diane	Grove	RN/IP	Villa St. Vincent	Crookston	MN	1
Irmadene	Hanson	CEO & Founder	Magnify Your Influence	Parkers Prairie	MN	3
Lynn	Hasseliuss	DON	Shakopee Friendship Manor HCC	Shakopee	MN	7
Mindy	Hathaway-Nelson	Senior MDS Specialist	Benedictine Health System	Shoreview	MN	7
Melissa	Heesch	Exec VP of Operations	Eventide Senior Living Communities	Moorhead	MN	3
Joy	Hellen-Gorder	RN, DON	St. Anthony Health Center	St. Anthony	MN	7
Shelly	Herron	DON	Aitkin Health Services	Aitkin	MN	4
Kimberly	Holland	Quality Consultant	St. Francis Health Services	Morris	MN	7
Stacey	Holstad	DON	Episcopal Homes - The Gardens	Saint Paul	MN	7
Dawn	Huelsman	RN, DON	Granite Falls Municipal Manor	Granite Falls	MN	5
Kristina	Ijomah	DON	Mount Olivet Careview Home	Minneapolis	MN	7
Megan	Ludwig	DON	Hilltop Healthcare Center	Watkins	MN	4
Stacey	Luong	DNS	Slayton Rehabilitation & Healthcare Center	Slayton	MN	6
Julie Ann	Manley-Hartje	C/DONA LTC	Garden Court Chateau	Grand Rapids	MN	2
Tammy	Marik	Regional Clinical Director	Presbyterian Homs and Services	Roseville	MN	7
Sara	McCormick	RN	Aicota Health Care Center	Aitkin	MN	4
Kirsten	McGowan	Assistant Admin/DON	Auburn Home in Waconia	Waconia	MN	7
Sheila	Miller	DON	Cuyuna Regional Medical Center	Crosby	MN	4
Deborah	Morell	Interim Administrator	Essentia Health Virginia Care Center	Virginia	MN	2



## Renewing Members

*MN-DONA would like to thank the following members who renewed their membership between the months of August 2017 - December 2017.*

*Thank you for your support!*

First Name	Last Name	Job Title	Company	City	State	District
Lisa	Muelken	ADON, TCU Nurse Manager	St. Gertrude's Health & Rehab Center	Shakopee	MN	7
Heather	Nelson	ADON	Fergus Falls Veterans Home	Fergus Falls	MN	3
Elsa	Niska	DON	Augustana Lakeside Health Care	Dassel	MN	4
Jennifer	Nogosek	DON	Sauer Health Care	Winona	MN	6
Stacy	Oberstar	DON	St. Francis Health Services	Morris	MN	2
Lori	Olson	RN, DON	Sunnyside Care Center	Lake Park	MN	3
Patricia	Perryman	DON	Knute Nelson	Alexandria	MN	3
Teresa	Platz	DON	MN Veterans Home - Fergus Falls	Fergus Falls	MN	3
Quinn	Potz	ADON	Mapleton Community Home	Mapleton	MN	6
Becky	Rieger	ADON	MN Veterans Home - Minneapolis	Minneapolis	MN	7
Kristine	Rogers	ADON	Lyngblomsten Care Center	St. Paul	MN	7
Debra	Rustad	DON	Valley Care and Rehab	Barnsville	MN	3
Priscilla	Schilling	Director of Quality	St. Francis Health Services	Morris	MN	3
Marsha	Scott	DON	New Harmony Care Center	St. Paul	MN	7
Yvonne	Severson	RN, Retired				5
Sue	Simon	RN,C				7
Marilyn	Sundquist	LTC SLL	Essentia Health - Fosston	Gonvick	MN	1
Megan	Tande	DON	Farmington HS/Trinity Care Center	Farmington	MN	7
Rachelle	Theis	ADON	Belgrade Nursing Home	Belgrade	MN	4
Candace	Trondson	ADON	Lyngblomsten Care Center	St. Paul	MN	7
Julie	Turnberg	RN, Retired				5
Lindsey	Wagenbach	DON	Elim Home and Rehab Center	Princeton	MN	4
Sara	Watkins	Administrator	Pioneer Care Center	Fergus Falls	MN	3
DeDe	Welin	RN/Nsg Mgmt Support Coordinator	Mount Olivet Careview Home	Minneapolis	MN	7
Mechelle	Zima	RN, BSN, DON	Mahnomen Health Center	Mahnomen	MN	1



## *Assisted Living Members*

*MN-DONA would like to thank the following members who joined or renewed their membership in Assisted Living Facilities between the months of August 2017 - December 2017.*

*Thank you for your support!*

## *New Assisted Living Members*

First Name	Last Name	Job Title	Company	City	State	District
Kari	Armstrong	DON	Glenwood Retirement Village	Glenwood	MN	3
Kendra	Koep	DON	St. Williams Living Center	Parkers Prairie	MN	3
Stephanie	Moss	DON/DHS	Woodbury Senior Living	Woodbury	MN	7
Marylynn	Noll	RN, ADM Supervisor	MDVA Hastings	Hastings	MN	7
Sarah	Strassburg	DON	Touch of Home	Bemidji	MN	1

## *Renewing Assisted Living Members*

First Name	Last Name	Job Title	Company	City	State	District
Brandy	Duden	AL/RN Manager	Villa St. Vincent	Crookston	MN	1
Judie	Kanten	RN Supervisor/The SUMMIT	Villa St. Vincent/The SUMMIT	Crookston	MN	1
Emily	Nyberg	Home Care Director	Jones-Harrison	Minneapolis	MN	7
Peggy	Ricci	Clinical Director	Lakeview Commons	Maplewood	MN	7
Karen	Roers	Director of Clinical Services	Galeon	Osakis	MN	3
Michelle	Scherf	RN, BSN, MPE	Garden Court Chateau	Grand Rapids	MN	2







## GET INVOLVED IN THE FUTURE OF MN-DONA!

### COMMITTEE INTEREST APPLICATION

Become involved in your future and that of your association! Now is the time to indicate your interest by volunteering to serve as a MN-DONA leader on a committee.

As a MN-DONA leader, you are offered the unique opportunity to actively network with your peers and make recommendations to the Board of Directors, which in turn develops policy for more than 296 members. Service in a leadership capacity means sharing your time, ideas and expertise to better MN-DONA. Don't pass up this exciting chance for volunteer involvement!

*Descriptions of committees are provided on the back of this form.*

Typically, MN-DONA committees meet three times per year – once in conjunction with the Fall Conference, once in conjunction with the Annual Meeting and again in July. Please complete this form if you would like to join a committee.

Name: \_\_\_\_\_

Title: \_\_\_\_\_

Company: \_\_\_\_\_

Complete Address: \_\_\_\_\_

Telephone: (Business) \_\_\_\_\_ Telephone: (Home) \_\_\_\_\_

Fax Number: \_\_\_\_\_ Email: \_\_\_\_\_

I would like to contribute to MN-DONA by serving as a member of the following committee(s):  
(If more than one, please list in order of preference).

1. \_\_\_\_\_

2. \_\_\_\_\_

3. \_\_\_\_\_

4. \_\_\_\_\_

Return this form to:

MN-DONA  
c/o Best Meetings, Inc.  
2626 E. 82<sup>nd</sup> St., Suite 270  
Bloomington, MN 55425  
952.858.8875 or 800.958.8875  
Fax: 952.858.8950



## **MN-DONA COMMITTEE OPPORTUNITIES**

**Nominating Committee:** The Nominating Committee shall serve the membership body by soliciting and securing candidates for offices and District Directors as needed and outlined in this Constitution, preparing and presenting the ballot to the members prior to the annual meeting.

**Constitution/Bylaws Committee:** The Constitution/Bylaws Committee shall draw up, word and prepare any and all amendments to the existing Constitution and Bylaws.

**Scholarship/Education Committee:** The Scholarship/Education Committee shall study the feasibility and appropriateness of all scholarships, participate in certification of the Director of Nursing as well as promote long term care curriculum development. The committee will administer and award all available scholarships. This committee will recommend to the Executive Committee expenditures for the education development of all members.

**Legislative Committee:** The Legislative Committee shall report to the membership at the annual meeting regarding legislative efforts promoted by this organization as outlined in the objectives (Article II) of the MN-DONA Constitution and ByLaws, and they shall endeavor to keep the membership body informed of matters of legislation pertaining to long term care.

**Publicity/Membership Committee:** The Publicity/Membership Committee shall endeavor to promote the organization by way of all public and industry media. Copies of all such endeavors shall be placed in the organization scrapbook. This committee shall promote membership of the organization.

**Finance Committee:** The Finance Committee shall be responsible for the preparation of a budget for the fiscal year and for submitting it to the organization at its general membership meeting for approval.

**Fall Conference Committee:** The Fall Conference Committee is exempt from guidelines specified in Article VIII of the MN-DONA Constitution and ByLaws. The purpose of this committee is to plan and coordinate the Fall Conference for the educational development of nursing management in long term care. The committee is comprised of District 3 MN-DONA members.

**Spring Conference Committee:** The purpose of this committee is to plan and coordinate the Spring Conference for the educational development of nursing management in long term care.

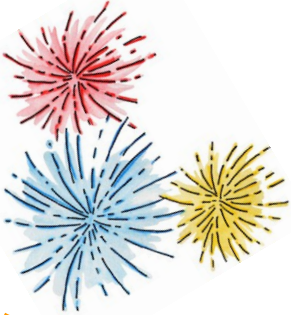
## Gold Sponsors

### On-Site Care, LLC

Jill Bigelbach  
5201 Eden Ave, Ste 50  
Edina MN 55436  
P: 763.545.7545 x5116  
F: 952.929.2067  
[jill@onsitecare.net](mailto:jill@onsitecare.net)  
[www.onsitecare.net](http://www.onsitecare.net)

### Thrifty White Pharmacy Services

Larry Palmer  
6055 Nathan Lane N., Suite 200  
Plymouth MN 55442  
P: 763.513.4359  
F: 763.463.4459  
[lpalmer@thriftywhite.com](mailto:lpalmer@thriftywhite.com)  
[www.thriftywhite.com/longtermcare](http://www.thriftywhite.com/longtermcare)



## Silver Sponsors

### Elim Preferred Services

James Letich  
3500 Holly Lane, #30  
Plymouth MN 55447  
P: 763.550.9486  
F: 763.550.1458  
[jletich@mac.com](mailto:jletich@mac.com)  
[www.epsmn.com](http://www.epsmn.com)

### Sterling LTC Pharmacy

Karmen Barnes  
1601 State Ave NW  
Owatonna MN 55060  
P: 507.455.9684  
F: 507.455.1750  
[asklcrx@sterlinglcrx.com](mailto:asklcrx@sterlinglcrx.com)  
[www.sterlinglcrx.com](http://www.sterlinglcrx.com)



**Thank You**  
**To Our Sponsors**

## Bronze Sponsors

### Acadia Pharmaceuticals

Matt Fennecy  
62 Saint Albans Street S  
St. Paul MN 55105  
P: 612.619.7179  
[mfennacy@acadia-pharm.com](mailto:mfennacy@acadia-pharm.com)

### Essity/TENA

Rebecca Hughes  
PO Box 10  
Renville MN 56284  
P: 320.444.7352  
[rebecca.hughes@essity.com](mailto:rebecca.hughes@essity.com)

### LeadingAge Minnesota

Gayle Kvenvold  
2550 University Ave W, Suite 350S  
St. Paul MN 55114  
P: 651.603.3500  
F: 651.645.0002  
[gkvenvold@leadingagemn.org](mailto:gkvenvold@leadingagemn.org)

### McKesson Medical-Surgical

Brenda Goldenstein  
8121 10th Ave N  
Golden Valley MN 55427  
P: 612.868.3823  
F: 763.241.4033  
[brenda.goldenstein@mckesson.com](mailto:brenda.goldenstein@mckesson.com)

### Pathway Health

Stacy Jones  
11240 Stillwater Blvd N  
Lake Elmo MN 55042  
P: 651.407.8699  
[conventions@pathwayhealth.com](mailto:conventions@pathwayhealth.com)



## Copper Sponsors

### 3M Critical & Chronic Care-Solutions Division

Marian Ricci  
3M Center Bldg 275-4W  
St Paul MN 55144  
P: 262.716.5146  
[mricci@mmm.com](mailto:mricci@mmm.com)

### American Medical Technologies

Susan Schuler  
6615 S. Saunders Lake Drive  
Minnetrista MN 55364  
P: 952.388.4340 F: 651.964.2781  
[susan.schuler@amtwoundcare.com](mailto:susan.schuler@amtwoundcare.com)

### ARKRAY

Annette Johnson  
5198 W 76th St  
Minneapolis MN 55439  
P: 612.258.5528  
[johnsona@arkrayusa.com](mailto:johnsona@arkrayusa.com)

### Custom Medical Solutions

Paul Bussey  
8601 73rd Ave N, Ste. 1  
Brooklyn Park MN 55428  
P: 952.913.5930 F: 763.535.5965  
[pbussey@custommedicalsolutions.com](mailto:pbussey@custommedicalsolutions.com)

### Guardian Pharmacy

Mark Boe  
9401 Industrial Drive South, Suite 102  
Sauk Rapids MN 56379  
P: 320.230.1050 F: 320.230.1051  
[mark.boe@guardianpharmacy.net](mailto:mark.boe@guardianpharmacy.net)

### HealthEast Medical Laboratory

Eric Razskazoff  
1690 University Ave. W, Suite 255  
St Paul MN 55104  
P: 651.326.3558 F: 651.326.8434  
[ecrazskazoff@healtheast.org](mailto:ecrazskazoff@healtheast.org)

### Ideacom Mid-America

Laura Johnson  
30 West Water St  
St Paul MN 55107  
P: 651.228.2634 F: 651.292.0144  
[ljohnson@idea-ma.com](mailto:ljohnson@idea-ma.com)

### Magnify Your Influence

Irmadene Hanson  
3725 County Road 36 NE  
Parkers Prairie MN 56361  
P: 320.760.6131  
[irma@irmadene.com](mailto:irma@irmadene.com)

### Northwest Respiratory Services

Mark Badenhoff  
716 Prior Ave N  
St Paul MN 55104  
P: 651.603.8720 F: 651.603.8723  
[mbadenhoff@nwrespiratory.com](mailto:mbadenhoff@nwrespiratory.com)

## Copper Sponsors (continued)

---

**Novo Nordisk, Inc.**

Nicole Pulsifer  
501 137th Ave NW  
Spicer MN 56288  
P: 320.217.9441  
[nipu@novonordisk.com](mailto:nipu@novonordisk.com)

**Option Care**

Shawn Duval  
114 Pauls Road NE  
Hutchinson MN 55350  
P: 952.917.9021 F: 320.323.3744  
[shawn.duval@optioncare.com](mailto:shawn.duval@optioncare.com)

**Professional Portable X-Ray, Inc.**

Gaute Sandberg  
755 Cliff Road East  
Burnsville MN 55337  
P: 952.915.9779 F: 952.915.9597  
[gaute.sandberg@ppxray.com](mailto:gaute.sandberg@ppxray.com)

**Senior Care Solutions**

Cally Freihammer  
PO Box 2283  
Stillwater MN 55082  
P: 651.564.1612  
[cally.freihammer@srcaresolutions.net](mailto:cally.freihammer@srcaresolutions.net)

**Stratis Health**

Kristen Wergin  
2901 Metro Dr, Suite 400  
Bloomington MN 55425  
P: 952.853.8561 F: 952.853.8503  
[kwergin@stratishealth.org](mailto:kwergin@stratishealth.org)

## Patron Sponsors

---

**Care Providers of Minnesota**

Doug Beardsley  
7851 Metro Parkway, Ste 200  
Bloomington MN 55425  
P: 952.851.2489 F: 952.854.6214  
[dbeardsley@careproviders.org](mailto:dbeardsley@careproviders.org)

**RX Care Assurance**

Mike Koenig  
8939 F Street  
Omaha NE 68127  
P: 800.228.5021 F: 800.543.8491  
[mkoenig@rxcareassurance.com](mailto:mkoenig@rxcareassurance.com)

**St. Croix Hospice**

Chris Hood  
7200 Hudson Blvd, Suite 230  
Oakdale MN 55128  
P: 651.283.9271 F: 651.735.0155  
[chood@stcroixhospice.com](mailto:chood@stcroixhospice.com)

**Voigt, Rode & Boxeth, LLC**

Amanda Stutz  
1000 University Ave W, Suite 250  
St Paul MN 55114  
P: 651.209.6161 F: 651.209.6160  
[astutz@vrb-law.com](mailto:astutz@vrb-law.com)

**Thank You**  
**To Our Sponsors**

## MN-DONA 2016

### Board of Directors, Committee Chairs & Office Contact information

#### Board of Directors

**President: Jennifer Parker**  
[jenny.parker@bethesdawillmar.com](mailto:jenny.parker@bethesdawillmar.com)  
 W: 320.214.5669

**President-Elect: Jennifer Fitch**  
[jp1@andrewres.com](mailto:jp1@andrewres.com)  
 W: 612.367.8166

**Recording Secretary: Jennifer Stromlund**  
[jennifers@oaklandparktrf.com](mailto:jennifers@oaklandparktrf.com)  
 W: 218.681.1675

**Corresponding Secretary: Laura Angell**  
[langell@preshomes.org](mailto:langell@preshomes.org)  
 W: 763.712.7004

**Treasurer: Barb Hylle**  
[barbara.hylle@bhshealth.org](mailto:barbara.hylle@bhshealth.org)  
 W: 612.879.2867

**District I Director: Tricia Hove**  
[tricia@macseniorliving.com](mailto:tricia@macseniorliving.com)  
 W: 218.563.2715

**District II Director: Jennifer Capra**  
[jcapra@cloquethospital.com](mailto:jcapra@cloquethospital.com)  
 W: 218.878.7037

**District III Director: Melissa Peterson**  
[mpeterson@eventide.org](mailto:mpeterson@eventide.org)  
 W: 218.291.2222

**District IV Director: Marlene Groetsch**  
[marlene.groetsch@bnhcc.com](mailto:marlene.groetsch@bnhcc.com)  
 W: 320.254.8215

**District V Director:**  
 Open Position

**District VI Director: Stephanie Sievert**  
[stephaniesievert@oakhillsnewulm.com](mailto:stephaniesievert@oakhillsnewulm.com)  
 W: 507.233.0841

**District VII Director: Kristine Rogers**  
[krogers@lyngblomsten.org](mailto:krogers@lyngblomsten.org)  
 W: 651.632.5304

**Advisor: Stacy Lind**  
[slind@ehomesmn.org](mailto:slind@ehomesmn.org)  
 W: 651.632.8823

**Webmaster: Jennifer Parker**  
[jenny.parker@bethesdawillmar.com](mailto:jenny.parker@bethesdawillmar.com)  
 W: 320.214.5669

#### Committees

**Constitution/Bylaws: Barb Hylle**  
[barbara.hylle@bhshealth.org](mailto:barbara.hylle@bhshealth.org)  
 W: 612.879.2867

**Finance: Barb Hylle**  
[barbara.hylle@bhshealth.org](mailto:barbara.hylle@bhshealth.org)  
 W: 612.879.2867

**Legislative: Nicole Spargur**  
[nicoles@fieldcrestcare.com](mailto:nicoles@fieldcrestcare.com)  
 W: 507.477.3266

**Nominating: Julie Manley-Hartje**  
[chateau@paulbunyan.net](mailto:chateau@paulbunyan.net)  
 W: 218.999.5998

**Fall Conference: Nicole Rupp**  
[nicolee@evansvillecc.org](mailto:nicolee@evansvillecc.org)  
 W: 218.948.2219

**Spring Conference: Marlene Groetsch**  
[marlene.groetsch@bnhcc.com](mailto:marlene.groetsch@bnhcc.com)  
 W: 320.254.8215

**Scholarship/Education: Laura Angell**  
[langell@preshomes.org](mailto:langell@preshomes.org)  
 W: 763.712.7004

**Publicity/Membership: Jesse Noska**  
[jessenoska@gmail.com](mailto:jessenoska@gmail.com)  
 W: 218.828.3691

#### MN-DONA Office

2626 E 82nd St, Suite 270  
 Bloomington MN 55425  
 Phone: 952.858.8875/800.958.8875  
 Fax: 952.858.8950  
[www.MN-DONA.org](http://www.MN-DONA.org)

**Staff Contacts:**  
 Administration/Conferences  
[barb@bestmeetings.com](mailto:barb@bestmeetings.com)

IT  
[jim@bestmeetings.com](mailto:jim@bestmeetings.com)

Membership/Sponsors  
[cathy@bestmeetings.com](mailto:cathy@bestmeetings.com)

Newsletter/Committees/Conferences  
[deanna@bestmeetings.com](mailto:deanna@bestmeetings.com)

#### 2018 Calendar

- |  |   |
|--|---|
| <ul style="list-style-type: none"> <li>• 1/24 Board of Directors Conference Call</li> <li>• 2/7-2/9 LeadingAge Institute &amp; Expo</li> <li>• 2/28 Board of Directors Conference Call</li> <li>• 3/2 Call for Nominations Due</li> <li>• 3/8 LAM and CPM days at the Capital</li> <li>• 3/28 Board Meeting in St. Cloud</li> <li>• 4/25 Board Meeting in St. Cloud</li> <li>• 4/26-4/27 Spring Conference in St. Cloud</li> <li>• 6/20 Board Meeting in St. Cloud</li> <li>• 7/25 Board of Directors Conference Call</li> </ul> | <ul style="list-style-type: none"> <li>• 8/10 Scholarship Applications Due</li> <li>• 8/15 DON of the Year Nominations Due</li> <li>• 8/22 Board Meeting in St. Cloud</li> <li>• 9/19 Board of Directors Conference Call</li> <li>• 10/9 Board Meeting at Breezy Point</li> <li>• 10/10-10/12 Fall Conference at Breezy Point</li> <li>• 11/12-14 Care Providers Convention</li> <li>• 12/5 Board of Directors TBD</li> </ul> |
|--|---|