

INSIDE THIS
ISSUE:

| | |
|----------------------------|-------|
| District Map | 2 |
| Spring Connection | 3 |
| DONs of the Year 2022 | 4 |
| District Updates | 5-6 |
| Nominations | 7 |
| Committee Opportunities | 8 |
| Member Testimonials | 9 |
| Our Sponsors! | 10-11 |
| Contact Info | 12 |

MN-DONA FOCUS

VOL 12, ISSUE 1

FEBRUARY 2023



Letter from the President

Hello MNDONA members,

I am Kristine Rogers, Assistant Director of Nursing at Lyngblomsten Care Center in St. Paul, and current president of MN-DONA. My term will be up this coming May, when Heather Nelson takes over as president. I will continue on the board, as advisor to Heather in her new role.

I hope this new year brings all of you good times and good surveys! It was great seeing so many of you **in person** at the Fall Conference. I feel that Fall Conference always refreshes me, and gives me renewed energy to continue to do this important work. I know we are still in winter, but spring is just around the corner, and so is our next conference, "Spring Connection". My hope is that many of you will be able to attend this conference. MN-DONA is stronger when we are together in person, learning and sharing stories and laughter.

I also encourage each of you to become active in your districts, by participating in the district meetings. These meetings are where we share recent updates for MDH, and CMS, discuss what the surveyors are focusing on, and share information with each other to help us improve. But probably the thing I take away from each district meeting I attend is that I am not alone; others are going through the same trials and tribulations. The support we extend to each other cannot be measured. It is exciting to also share that our MN-DONA membership numbers have been growing. During COVID, our membership slipped a bit, but now our numbers are back up to 225 members! Let's continue to grow MN-DONA and make positive changes in our LTC and AL facilities!

Like us on
Facebook!



Minnesota
Directors of Nursing
Administration/LTC

MN-DONA DISTRICT MAP



President - Kristine Rogers
Lyngblomsten - St Paul
KRogers@Lyngblomsten.org



District 1 - Mechelle Zima
Mahnomen Health Center
Mechelle.zima@sanfordhealth.org
Meeting: Second Thurs of every odd month at Noon. Deuce in Erskine, MN



District 2 - Holly Moore
Grand Village - Grand Rapids
hollymoore@ecumen.org
Meeting: Contact Holly



District 3 - Leah Lee (Interim)
Halstead Living Center
hlcdon@halstadlivingcenter.com
Meeting: First Thurs of the month on Zoom



District 4 - Patty Anderson
Green Pine Acres - Menahga
panderson@greenwoodconnections.com
Meeting: First Wed of the Month on Zoom



District 5 - Holly Mellendorf
Avera Morningside Heights
Holly.mellendorf@avera.org
Meeting: Last Tuesday of the month at 2 pm on Zoom



District 6 - Angela Stevens
Ecumen Pathstone Living - Mankato
angelastevens@ecumen.org
Meeting: 2nd Wed every odd month at the Pizza Ranch in Mankato at 12pm.



District 7 - Greg Wainman (Interim)
Lyngblomsten - St Paul
gregwainman@lyngblomsten.org
Meeting: First Tues of the month



Spring Connection and Annual Meeting

MAY 10 & 11, 2023

THE PARK EVENT CENTER
ST CLOUD MN

Breakout Sessions

- Emergency Preparedness- Michael Mireau
- AL Survey Update - Kari Everson and Lisa Bahr
- ICAR AL - Tammy Hale (MDH)
- SNF MDS Update - Pathway Health
- Psychotropic Monitoring - Rich Hauver
- AL Maltreatment Reporting - Rob Rode
- Bedside Rails - Kari Everson
- SNF Survey Update - Mary Zellner

REGISTER
HERE!

NEW THIS YEAR
UP TO 20 EXHIBITORS!

Annual Meeting Thurs, May 11

5 new Board Members will be inducted- See page 7

What past attendees enjoyed about MN-DONA Conferences

Will improve my confidence in my leadership role in my facility

Appreciate the opportunities to network

Amazing and informative presentation! Great locations!

Knowing many struggle with the same issues makes you feel not so alone

Personal Balance Scholarship & AL Clinical Director of the Year Award

We will again award a \$500 Personal Balance Scholarship (which will go toward a well-needed break for one of our members), scholarship applications can be found here: [Scholarship Application Form](#) We will also award the AL Clinical Director of the Year at the Spring Connection, nomination information will be sent Feb 15.

DONs of the Year 2022

This year we had 5 DON of the Year nominees, and 2 DON of the Year winners as their scores were very close.

Congrats to the winners!

Below are some things their coworkers had to say about them!

Ishmael Komara



Compassionate care provider

Highly skilled clinician

True lifelong learner

A trustworthy leader, role model and mentor

During COVID helped reduce workers burnout and labor shortages

Knows staff and their family members by name; attends birthdays and graduation parties

'I trust this person with my life!'

Pat Smedstad



Led her facility to have two citation-free surveys last year and be rated a five-star facility

Delayed her retirement due to Covid

Is knowledgeable and keeps staff educated and up-to-date on regulations, especially related to Covid

Values promotion from within and has everyone's best interests at heart

'Type of leader and DON that I aspire to be!'

District Updates

District 1 Northwestern MN **Rep** Mechelle Zima

The next District 1 meeting is 12pm on March 9 at Deuce in Erskine, MN. Contact Mechelle.zima@sanfordhealth.org or (218)935-9440 to get involved!

Mechelle is also the Spring Connection Committee Chair. The last committee meeting was Jan 31 and had good attendance, we increased the number of CEUs at the Connection and finished confirming speakers/other details. The next meeting is Feb 14 at 10am. over Zoom.

District 2 Northeastern MN **Rep** Holly Moore

Contact Holly at hollymoore@ecumen.org to get involved

District 3 West Central MN **Interim Rep** Leah Lee

Topics and challenges we discussed at our last meeting: The 3 day hospital stay waiver ending soon, enhanced barrier precautions, staffing, and how to improve attendance at district meetings and having speakers/educators at meetings. The next meeting will be March 2 at 9:30am, location TBD. Contact Leah at hlcdon@halstadlivingcenter.com or (218) 456-2105

District 3 members have helped coordinate the Fall Conference since its inception. The Fall Conference committee chair is currently Nola Smith. At their last meeting they discussed ways to increase attendance at conference, budgeting, and continued vendor support, and will review Fall Conference info at the district meeting in March. Contact Nola at nola529smith@gmail.com (district 3 only).

District 4 East Central MN Rep: Patty Anderson

Our last meeting was on January 4 over Zoom, where we discussed issues related to staffing. Our goal for 2023 is to have quarterly in-person meetings, and we would also like to increase member involvement.

Contact Patty at panderson@greenwoodconnections.com to get involved!

District 5 Southwestern MN Rep: Holly Mellendorf

Meetings are the last Tuesday of the month at 2pm over Zoom.

Contact Holly at holly.mellendorf@avera.org

District 6 Southeastern MN Rep Angela Stevens

At our last meeting on Jan 11 over Microsoft Teams, we discussed recent survey trends, OHFC surveys, staffing agency use, wound care providers, and LTC funding. One issue we are facing as a group is on-going staffing challenges. A goal for 2023 is to continue to network with others and share survey findings.

Contact angelastevens@ecumen.org or (507) 380-4936

District 7 Metro Area Rep Greg Wainman (Interim)

Our meetings are the first Tuesday of the month at noon, currently over Zoom. Last meeting we discussed emergency radio systems, resp protection plans, float nurses, dining with loved ones, and vaccinations.

We are hoping to increase attendance, contact Greg at gregwainman@lynngblomsten.org or (651) 632-5418 for more information!

Go to mndona.org for a calendar of events and more ways to get involved!

Nominations

At the 2023 Spring Connection/Annual Meeting, five officers on the MN-DONA Board will be up for election:

Treasurer
District Reps I, III, V, and VII

You are invited to run for an office or nominate someone you believe would be a good fit!

[Click here](#) *for the nomination form*

Time Commitment Monthly board meetings plus monthly district meetings for reps, including those at fall and spring conferences. Some board meetings are on Zoom and some are in-person in St. Cloud.

Eligibility requirements include Proof of current employment as DON or ADON working in LTC or an AL Director. Candidate must be actively involved in MN-DONA

Five Star Quality Measures- Back to Basics Webinar 1-2pm Thur Feb 23

This webinar will demystify publicly reported information on the Care Compare website and provide ideas about how to impact your quality measure scores and overall Five Star Quality Rating. We will:

- Review the basic calculation for the overall Five Star Quality Rating
 - Identify the quality measures which impact your star rating
- Discuss approaches to root cause analysis of quality measures to improve your facility's rating

CONTACT US TO REGISTER!

COMMITTEE OPPORTUNITIES

We can always use help on committees, please fill out this form if interested:
[Committee Application Form](#)

Nominating Committee: Serves the membership body by soliciting and securing candidates for offices and District Directors as needed and outlined in the Constitution/Bylaws, preparing and presenting the ballot to the members prior to the annual meeting.

Constitution/Bylaws Committee: Is responsible for drawing up, wording and preparing any and all amendments to the existing Constitution and Bylaws.

Scholarship/Education Committee: Administers and awards all available scholarships. The committee studies the feasibility/appropriateness of all scholarships, participates in certification of the Director of Nursing as well as promote long term care curriculum development. This committee will recommend to the Executive Committee expenditures for the education development of all members.

Legislative Committee: Reports to the membership at the annual meeting regarding legislative efforts promoted by this organization as outlined in the objectives (Article II) of the MN-DONA Constitution and Bylaws, and they endeavor to keep the membership body informed of matters of legislation pertaining to long term care.

Publicity/Membership Committee: Promotes the organization by way of all public and industry media. Copies of all such endeavors shall be placed in the organization scrapbook. This committee shall promote membership of the organization.

Finance Committee: Responsible for the preparation of a budget for the fiscal year and for submitting it to the organization at its general membership meeting for approval.

Fall Conference Committee: This committee is comprised of District 3 MN-DONA members only and helps plan and coordinate the Fall Conference for the educational development of nursing management in long term care.

Spring Connection Committee: Helps plan and coordinate the Spring Connection for the educational development of nursing management in long term care.

2022 Scholarship Winners

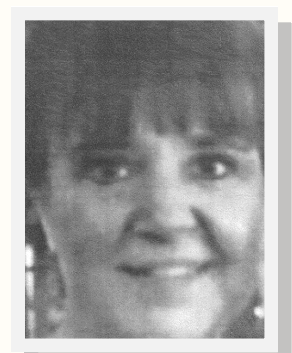
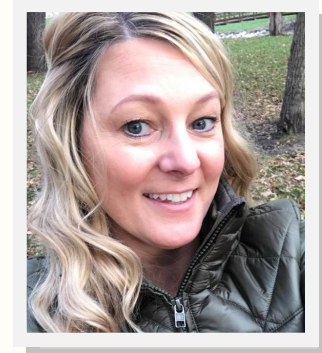
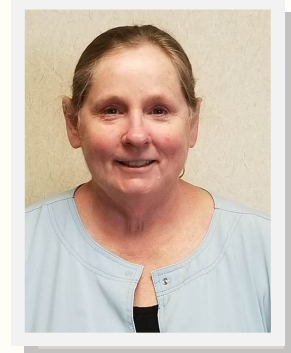
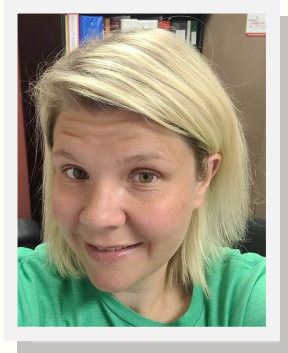
18 Scholarship winners were awarded
at the 2022 Fall Conference!

Non-member Winners

| | |
|----------------------|------------------------|
| Alexis McCall | Leslie Rasmussen |
| Catherine Lesaibile | Olivia Ellingson |
| Denise Nelson | Sara Neese |
| Fte-Hudani Achinge | Shannon Egge |
| Hattie Drier-Schultz | Sybil Schultz |
| Jamie Schultz | Tiffany Aaenrud-Worden |
| Joanna Salerno | Vlajko Ivkovic |

Members (pictured below)

Ashley Nicholson, Diane Grove, Laura DeLage, Jennifer Nogosek



New 2023 Scholarship Program!

For the first time, 2023 *sponsor* scholarships will instead go toward \$500 off registration and room/board for the Fall Conference (most of the cost). Three educational scholarships will still be provided next year from the raffle at Fall Conference.

This will help DONs and other nurse leaders attend the conference that would not otherwise be able to attend! Applications for both types of scholarships will be sent out in summer.

THANK YOU TO OUR SPONSORS!

GOLD

Thrifty White Pharmacy

Emily Quicksell
6701 Evenstad Dr Ste 100
Maple Grove, MN 55369
763.513.4394
equicksell@thriftywhite.com



SILVER

Elim Preferred Services

James Letich
3500 Holly Lane #30
Plymouth, MN 55447
763.550.9486
jletich@me.com

BRONZE

ACADIA Pharmaceuticals

Dan Lane
5331 Ivanhoe St
Duluth, MN 55804
218.591.9446
dlane@acadia-pharm.com

Guardian Pharmacy

Mark Boe
940 Industrial Drive S STE 102
Saulk Rapids, MN 56379
320.257.8758
mark.boe@guardianpharmacy.net

LeadingAge Minnesota

Kari Everson
2550 University Ave W, Ste 350S
St. Paul, MN 55114
651.603.3502
keverson@leadingagemn.org

Pathway Health

Teckla Johnson
Lake Elmo, MN
651.407.8699
teckla.johnson@pathwayhealth.com

McKesson Medical-Surgical

Brenda Goldenstein
19106 Carson St. NW
Elk River, MN 55330
800.328.8111 x 57057
Brenda.goldenstein@mckesson.com

Lotus Pharmacy

Jill Lytwyn
10980 1st Ave N
Plymouth MN 55441
612.425.9145
jlytwyn@lotuspharmacy.com

Companies interested in sponsoring should go to

<https://www.mndona.org/sponsorship-program> or email sarah@bestmeetings.com

COPPER

AlixarRx

Karen Knock
Savage, MN
612.709.5880
karen.knock@alixarx.com

Essity HMS

Tammy Anderson
White Bear Lake, MN
651.260.6489
tammy.anderson@essity.com

Peerlytics

Christina Haeg
Shoreview, MN
651.472.6949
christinahaeg@peerlytics.org

Senior Care Solutions

Stacy Jones
Stillwater, MN
651.260.5989
stacy.jones@srcaresolutions.net

ARKRAY, USA

Chris Leitz
Minneapolis, MN
800.818.8877 ext 2940
leitzc@arkrayusa.com

Neurocrine Biosciences

Tom Kasinak
San Diego, CA
651.304.7470
leitzc@arkrayusa.com

Radius Living RX

Naomi Evans
St Paul, MN 55107
651.271.9938
nevans@radiuslivingrx.com

Sterling LTC Pharmacy

Karmen Barnes
Owatonna, MN
877.224.0084
askltc@sterlingltx.com

Teva Pharmaceuticals

Karen Smith
Parsippany, NJ
701.238.7453
Karen.smith@tevapharm.com

Custom Medical Solutions

Paul Bussey
Brooklyn Park, MN
952.913.5930
pbussey@custommedicalsolutions.com

Northwest Respiratory Services

Mark Badenhoff
St. Paul, MN
651.603.8720
mbadenhoff@nwrespiratory.com

St. Croix Hospice

Chris Hood
Oakdale, MN
651.283.9271
chood@stcroixhospice.com

Superior Health Quality Assurance/Stratis Health

Kristen Wergin
Bloomington, MN
952.853.8561
kwergin@stratishealth.org

THANKS TO OUR PATRON!

Voigt, Rodé , Boxeth & Coffin

Amanda Stutz
St Paul, MN 55104
651.209.6161
astutz@vrb-law.com

MN-DONA 2023

Board of Directors, Committee Chairs & Office Contact information

Board of Directors

President: Kristine Rogers
krogers@lyngblomsten.org

W: 651.632.5304

President-Elect: Heather Nelson
heather.nelson@state.mn.us

W: 218.770.9577

Secretary:

Jennifer Stromlund
jennifers@eldercaremn.com

C: 218.688.0101

Treasurer: Lori Roers
lori@stwilliamslivingcenter.com

C: 320.815.1714

District I Director: Mechelle Zima
Mechelle.zima@sanfordhealth.org
C: 218.473.3061

District II: Holly Moore
hollymoore@ecumen.org

C: 218.259.9798

District III: Leah Lee (Interim)
hlcdon@halstadlivingcenter.com
W: 218.456.2105

District IV : Patty Anderson
Panderson@greenwoodconnections.com

W: 218.564.4101 ext 110

District V: Holly Mellendorf
Holly.mellendorf@avera.org

W: 507.537.9122

District VI: Angela Stevens
angelastevens@ecumen.org

W: 507.385.4343

District VII: Greg Wainman
gregwainman@lyngblomsten.org

W: 651.632.5418

Committee Chairs

Constitution/Bylaws:

Patty Anderson

Panderson@greenwoodconnections.com

W: 218.564.4101 ext 110

Fall Conference: Nola Smith
nola@529smith@gmail.com

Finance: Lori Roers
lori@stwilliamslivingcenter.com
C: 320.815.1714

Legislative: Angela Stevens
angelastevens@ecumen.org

W: 507.385.4343

Spring Conference: Mechelle Zima
Mechelle.zima@sanfordhealth.org
C: 218.473.3061

Nominating: Open

Scholarship/Education: Open

Publicity/Membership: Open

MN-DONA Office

2626 E 82nd St, Suite 270
Bloomington MN 55425

P: 800.958.8875

www.MNDONA.org

Staff Contacts:

Administration/Conferences

sarah@bestmeetings.com

IT/Membership/Committees

jim@bestmeetings.com

Newsletter

sarah@bestmeetings.com

Sponsors

sarah@bestmeetings.com